

Holland Park - Yeronga

SA3 Population Health
Snapshot 2023

79,384

Demographics₁

people living in this region in 2021

28 km²

Age	First Nations		Non Indigenous		Not Stated		Total
	Count	% of Age group	Count	% of Age group	Count	% of Age group	
0-4	78	2.0%	3,784	95.0%	123	3.1%	3,985
5-14	141	1.9%	7,010	95.3%	204	2.8%	7,355
15-24	314	2.6%	11,582	94.2%	393	3.2%	12,289
25-44	406	1.4%	27,743	95.0%	1,069	3.7%	29,218
45-64	228	1.3%	16,274	94.8%	664	3.9%	17,166
65+	70	0.7%	8,769	93.6%	532	5.7%	9,371
Total pop	1,237	1.6%	75,162	94.7%	2,985	3.8%	

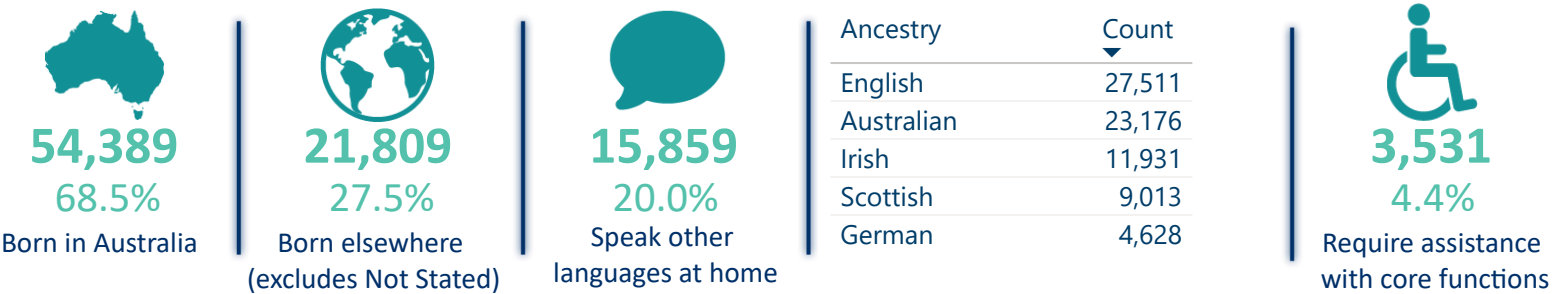
Male
39,023 49.2%

Female
40,360 50.8%

(Approximates)


Priority Populations₁

Top 5 Ancestries



Social determinants_{2,1}



Education	Eligible respondents	% respondents		Higher education	Eligible respondents	% respondents
Didn't go to school	328	1%		Cert I/II/nfd	1,512	3%
Yr10 or below	9,293	14%		Cert III/IV	7,276	16%
Yr11/equiv	2,860	4%		Advanced Diploma/Diploma	6,188	14%
Yr12/equiv	52,322	81%		Grad Diploma/Certificate	2,880	6%
				Bachelor Degree	20,176	44%
				Post Grad Degree	7,766	17%

Medians (middle of the group)₁

34yrs

Age

\$1,029

Weekly personal income

\$2,699

Weekly family income

\$2,032

Weekly household income

\$2,100

Monthly mortgage repayments

\$390

Weekly rent

Holland Park - Yeronga

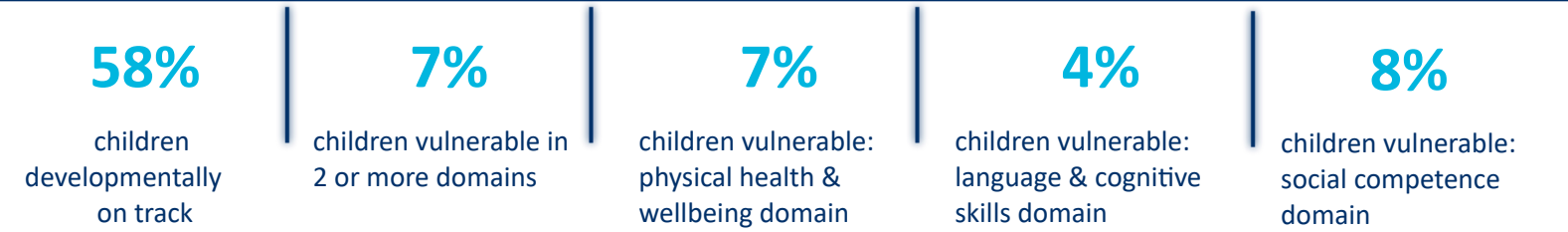
SA3 Population Health
Snapshot 2023

79,384
people living in this region in 2021

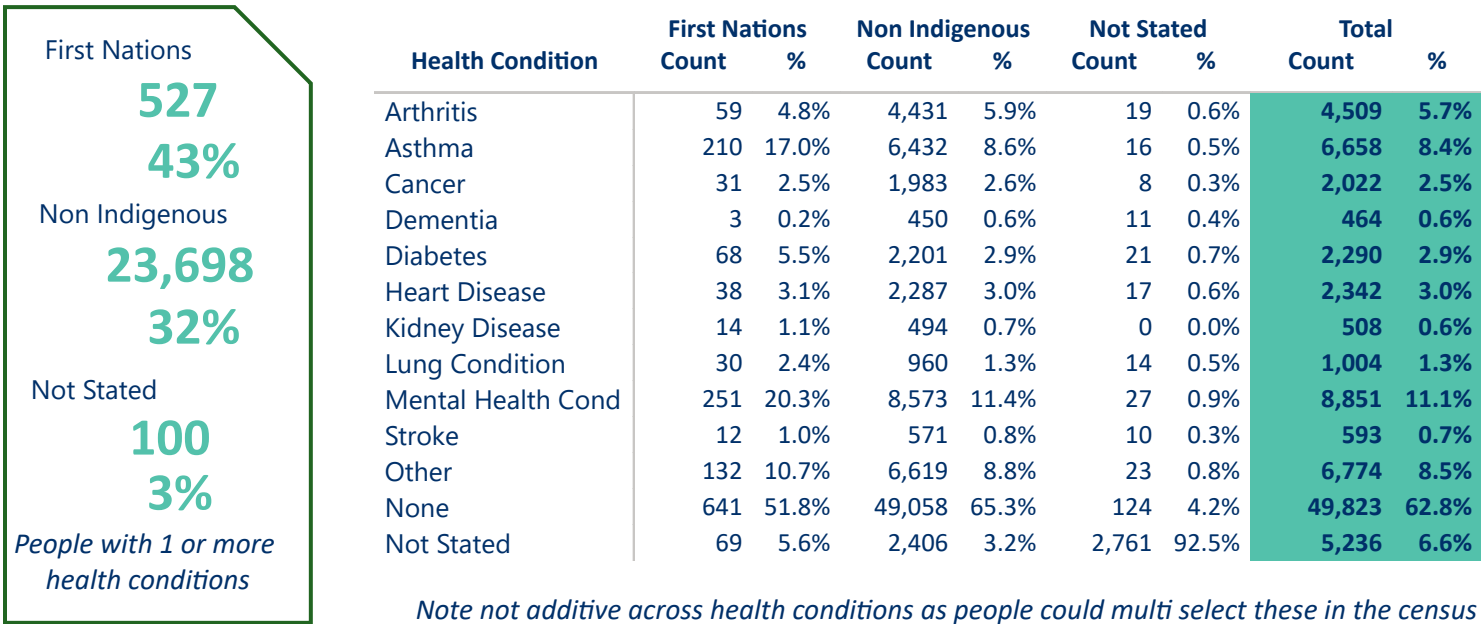


Vulnerable children₃

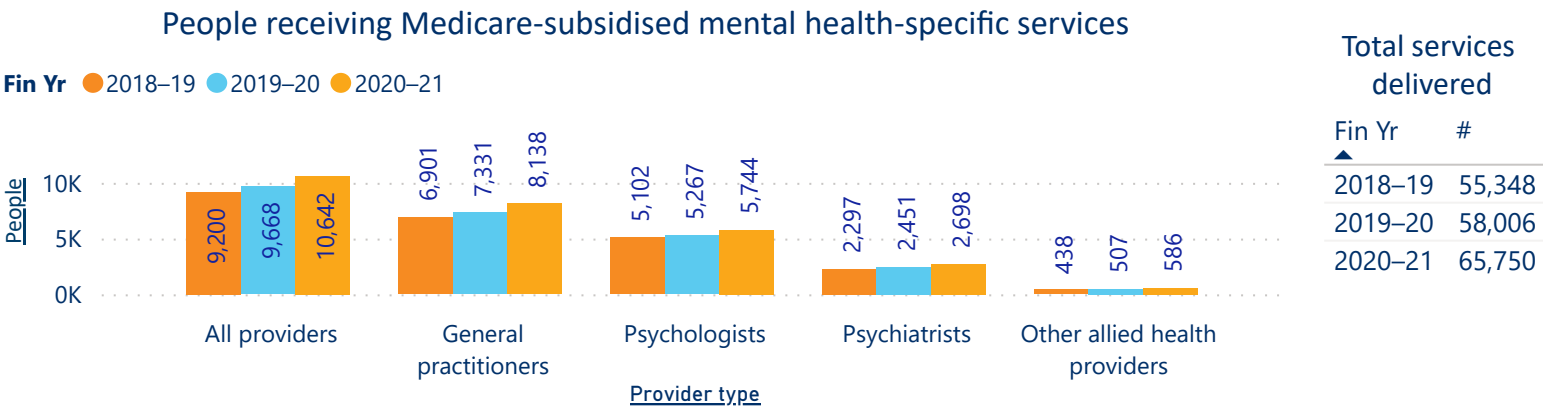
Australian Early Developmental Census



Self-reported long term health conditions₁



Mental health₄



Death - Top 3 causes of death₅

Crude rate per 100,000

1. Coronary heart disease(85.3) 2. Dementia(52.7) 3. Cerebrovascular disease(29.8)

SOURCES: 1 ABS 2021 Census, Datapacks, retrieved 01/12/22, <www.abs.gov.au/census/find-census-data/datapacks>, 2 Queensland Government Statistician's Office, Regional Database, retrieved 5/12/22, <www.qgso.qld.au> | 3 Australian Early Development Census, Data, retrieved 5/12/22, <www.aedc.gov.au/early-childhood> | 4 AIHW, Medicare-subsidised mental health specific services, retrieved 5/12/22, <www.aihw.gov.au/mental-health/topic-areas/medicare-subsidised-services> | 5 AIHW, MORT Death data 2016-20, retrieved 10/10/22, <www.aihw.gov.au>

Note -The ABS data captured in this report presents people as Male or Female, despite the census allowing for non-binary responses. Further information in how this was collected in the census and consequently provided can be found at www.abs.gov.au/articles/non-binary-sex-2021-census