

# Forest Lake - Oxley

SA3 Population Health  
Snapshot 2023

78,721




## Demographics<sub>1</sub>

people living in this region in 2021

Age	First Nations		Non Indigenous		Not Stated		Total	64 km <sup>2</sup>	Male 39,971 50.8%	Female 38,755 49.2%
	Count	% of Age group	Count	% of Age group	Count	% of Age group				
0-4	251	4.6%	4,978	90.3%	283	5.1%	5,512			
5-14	557	5.2%	9,499	89.3%	579	5.4%	10,635			
15-24	580	5.4%	9,740	90.3%	469	4.3%	10,789			
25-44	1,086	4.4%	22,236	91.1%	1,085	4.4%	24,407			
45-64	554	3.1%	16,673	93.2%	668	3.7%	17,895			
65+	158	1.7%	8,934	94.2%	391	4.1%	9,483			
Total pop	3,186	4.0%	72,060	91.5%	3,475	4.4%				(Approximates)

## Priority Populations<sub>1</sub>


### Top 5 Ancestries



43,362

55.1%


Born in Australia



31,477

40.0%

Born elsewhere  
(excludes Not Stated)




30,554

38.8%

Speak other  
languages at home

Ancestry	Count
English	18,177
Australian	16,312
Vietnamese	10,563
Irish	4,669
Scottish	4,503



4,717

6.0%

Require assistance  
with core functions

## Social determinants<sub>2,1</sub>

 93% Dwellings with at least 1 vehicle	 83% Dwellings with Internet connection (2016)	 6.9% Unemployment rate (6/22)	 9% Families with income of less than \$650/week
-------------------------------------------------	---------------------------------------------------------	--------------------------------------	-----------------------------------------------------------

Education			Higher education		
Education	Eligible respondents	% respondents	Higher education	Eligible respondents	% respondents
Didn't go to school	1,672	3%	Cert I/II/nfd	1,854	6%
Yr10 or below	16,960	29%	Cert III/IV	8,874	30%
Yr11/equiv	3,915	7%	Advanced Diploma/Diploma	5,215	18%
Yr12/equiv	35,931	61%	Grad Diploma/Certificate	1,138	4%
			Bachelor Degree	9,054	31%
			Post Grad Degree	3,018	10%

## Medians (middle of the group)<sub>1</sub>

34yrs Age	\$691 Weekly personal income	\$1,798 Weekly family income	\$1,586 Weekly household income	\$1,630 Monthly mortgage repayments	\$355 Weekly rent
--------------	------------------------------------	------------------------------------	---------------------------------------	-------------------------------------------	----------------------



# Forest Lake - Oxley

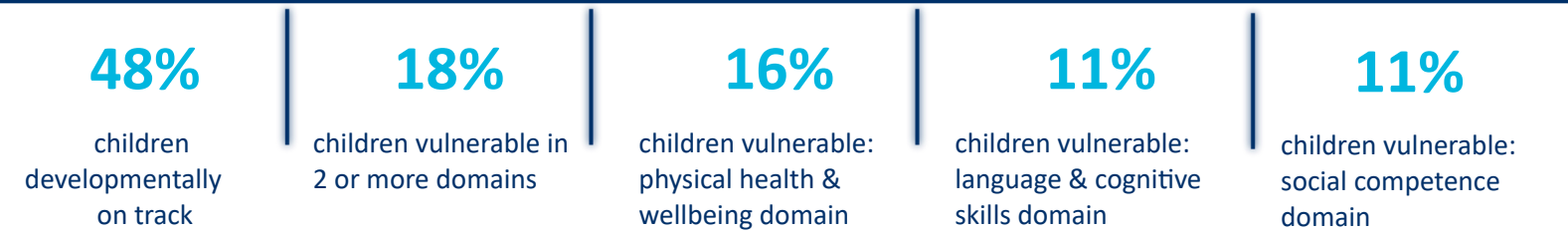
SA3 Population Health  
Snapshot 2023

78,721  
people living in this region in 2021

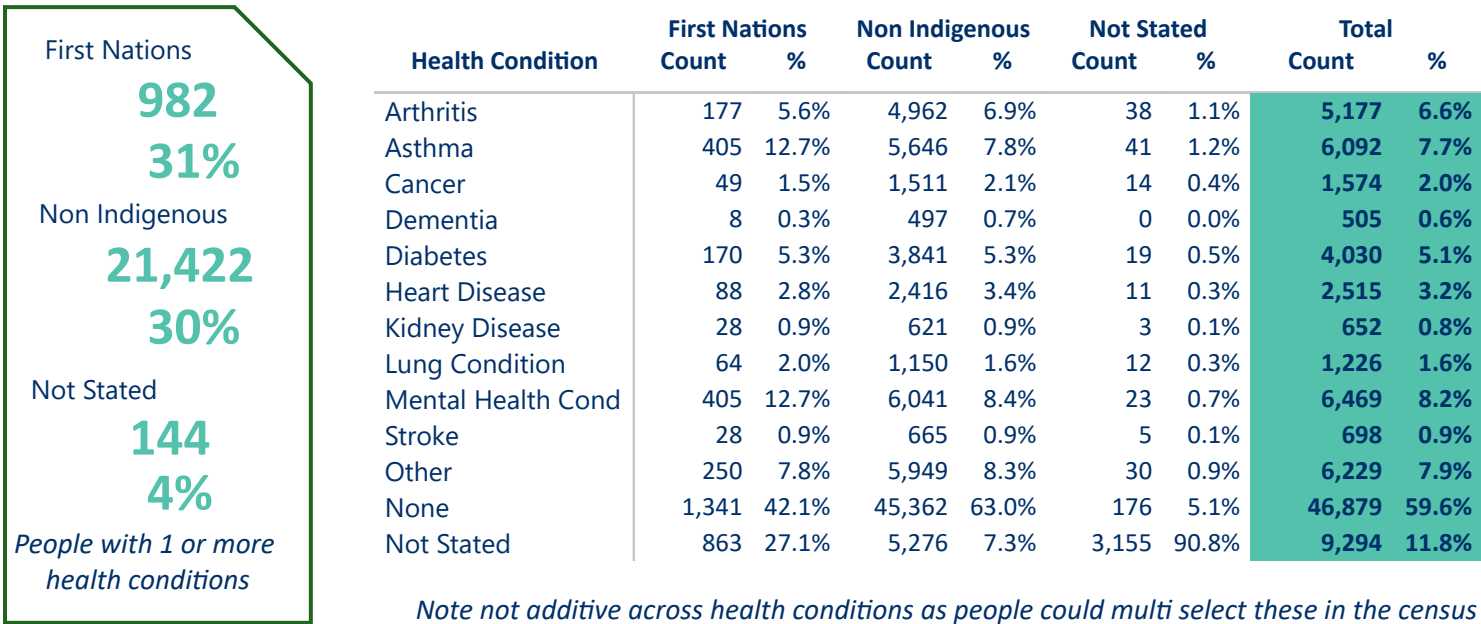


## Vulnerable children<sub>3</sub>

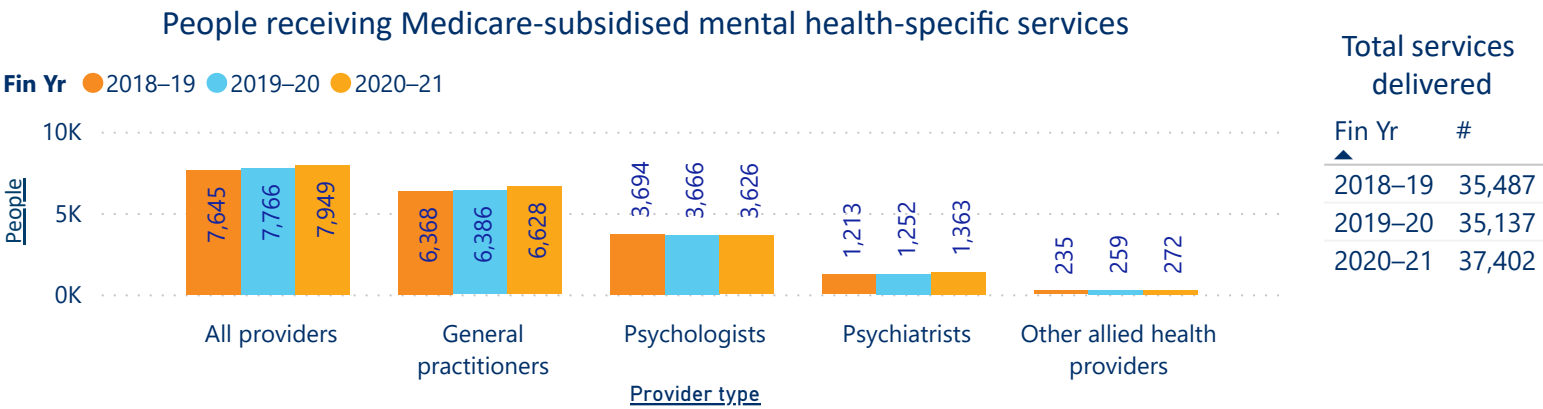
Australian Early Developmental Census



## Self-reported long term health conditions<sub>1</sub>



## Mental health<sub>4</sub>



## Death - Top 3 causes of death<sub>5</sub>

Crude rate per 100,000

1. Coronary heart disease(64.1) 2. Cerebrovascular disease(35.8) 3. Lung cancer(31.9)

SOURCES: 1 ABS 2021 Census, Datapacks, retrieved 01/12/22, <www.abs.gov.au/census/find-census-data/datapacks>, 2 Queensland Government Statistician's Office, Regional Database, retrieved 5/12/22, <www.qgso.qld.au> | 3 Australian Early Development Census, Data, retrieved 5/12/22, <www.aedc.gov.au/early-childhood> | 4 AIHW, Medicare-subsidised mental health specific services, retrieved 5/12/22, <www.aihw.gov.au/mental-health/topic-areas/medicare-subsidised-services> | 5 AIHW, MORT Death data 2016-20, retrieved 10/10/22, <www.aihw.gov.au>

Note -The ABS data captured in this report presents people as Male or Female, despite the census allowing for non-binary responses. Further information in how this was collected in the census and consequently provided can be found at [www.abs.gov.au/articles/non-binary-sex-2021-census](http://www.abs.gov.au/articles/non-binary-sex-2021-census)